



## 245 Ridal Avenue

Stocksbridge, Sheffield, S36 1EY

**Guide price £165,000**





# 245 Ridal Avenue

Stocksbridge, Sheffield, S36 1EY

**Guide price £165,000**



Nestled on Ridal Avenue in the charming area of Stocksbridge, Sheffield, this semi-detached house presents a wonderful opportunity for those seeking a project to make their own. With two well-proportioned bedrooms and a comfortable reception room, the property offers a welcoming space for both relaxation and entertaining.

The house is set on a generous plot, providing ample outdoor space and the potential for extension, allowing you to tailor the home to your specific needs. The countryside views from the property add a delightful touch, offering a serene backdrop to daily life.

While the home is in need of modernisation throughout, this presents a blank canvas for creative minds to reimagine the space and bring it up to date. The absence of a chain means that you can move forward with your plans without delay, making this an attractive option for first-time buyers or those looking to invest in a property with great potential.

Additionally, the property includes parking for one vehicle, ensuring convenience for residents. This semi-detached house is not just a home; it is an opportunity to create a personalised sanctuary in a picturesque setting. If you are looking for a property that combines potential with a lovely location, this could be the perfect choice for you.

### Lounge/Dining Room

24'8" x 16'1" max (7.53m x 4.90m max)

A spacious lounge and dining room filled with natural light from multiple windows. The living area offers a warm setting with traditional touches such as a feature chandelier and a classic parquet floor. The dining space comfortably fits a table and chairs beneath a bay window that frames views of the street outside. The room flows seamlessly, providing a versatile space for relaxing and entertaining alike.

### Kitchen

7' x 8'3" (2.14m x 2.51m)

The kitchen offers a practical layout with ample work surfaces and white cabinetry. A window above the sink brings in natural light, enhancing the room's bright and airy feel. The adjoining utility room provides additional space for laundry appliances and storage, accessed via a door from the kitchen and featuring its own rear door leading outside.

### Utility Room

5'10" x 5'2" (1.77m x 1.57m)

A handy utility room with space for laundry appliances and additional storage. It has a door leading to the outside store, making it functional for practical household needs.

### Entrance Hall

The entrance hall welcomes you into the home and provides access to the lounge/dining room along with stairs rising to the first floor. It features a handy under-stairs storage cupboard and a straightforward, bright design with carpeted flooring that continues up the stairs.

### Bedroom 1

9'10" x 16'1" (3.00m x 4.90m)

A well-lit main bedroom with a pair of windows offering generous natural light. It features built-in wardrobes and storage cupboards along one wall, finished with parquet flooring that adds warmth underfoot. The neutral walls provide a blank canvas to personalise the space.

### Bedroom 2

11'6" x 8'3" (3.51m x 2.52m)

A second bedroom with built-in storage and a window looking out to the front of the property. The room features a soft carpet and neutral tones, providing a cosy and restful atmosphere.

### Bathroom

The family bathroom includes a traditional white suite with a bath, pedestal sink, and toilet. A frosted window allows natural light in while maintaining privacy.

### Landing

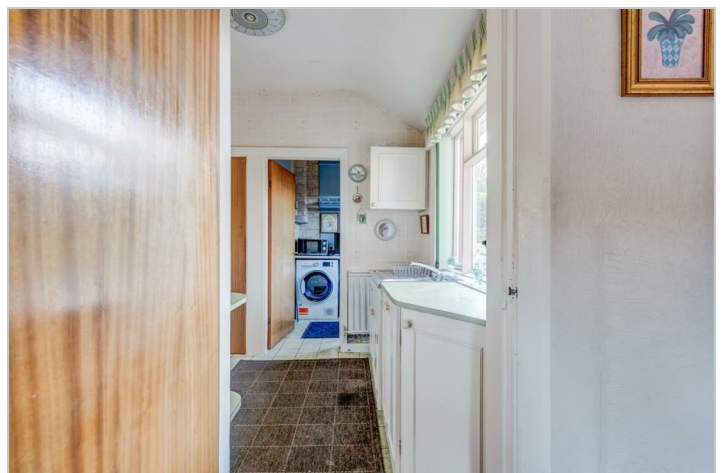
The landing provides access to the bedrooms and bathroom on the first floor with carpeted flooring and a simple, bright design.

### Rear Garden

The rear garden is well-maintained and spacious, featuring a lawn bordered by established hedging and shrubbery. A paved patio area at the rear offers a pleasant space for outdoor seating and entertaining, while a garden store provides useful external storage. The garden is enclosed, providing privacy and shelter.

### Front Exterior

The front exterior of the property is traditional and welcoming, with a neat lawn and shrubbery in the front garden. The semi-detached home displays characterful brick detailing around the windows and a bright red front door creating a charming and inviting entrance.





Road Map



Hybrid Map



Terrain Map



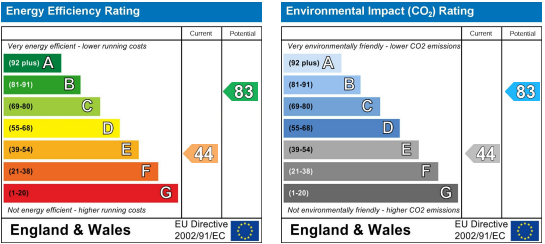
Floor Plan



Viewing

Please contact our JPM Estate Agents Office on 01226610606 if you wish to arrange a viewing appointment for this property or require further information.

Energy Efficiency Graph



These particulars, whilst believed to be accurate are set out as a general outline only for guidance and do not constitute any part of an offer or contract. Intending purchasers should not rely on them as statements of representation of fact, but must satisfy themselves by inspection or otherwise as to their accuracy. No person in this firms employment has the authority to make or give any representation or warranty in respect of the property.